



KD 200-60 F Series

KD240GX-LFB KD245GX-LFB KD250GX-LFB

CUTTING EDGE TECHNOLOGY

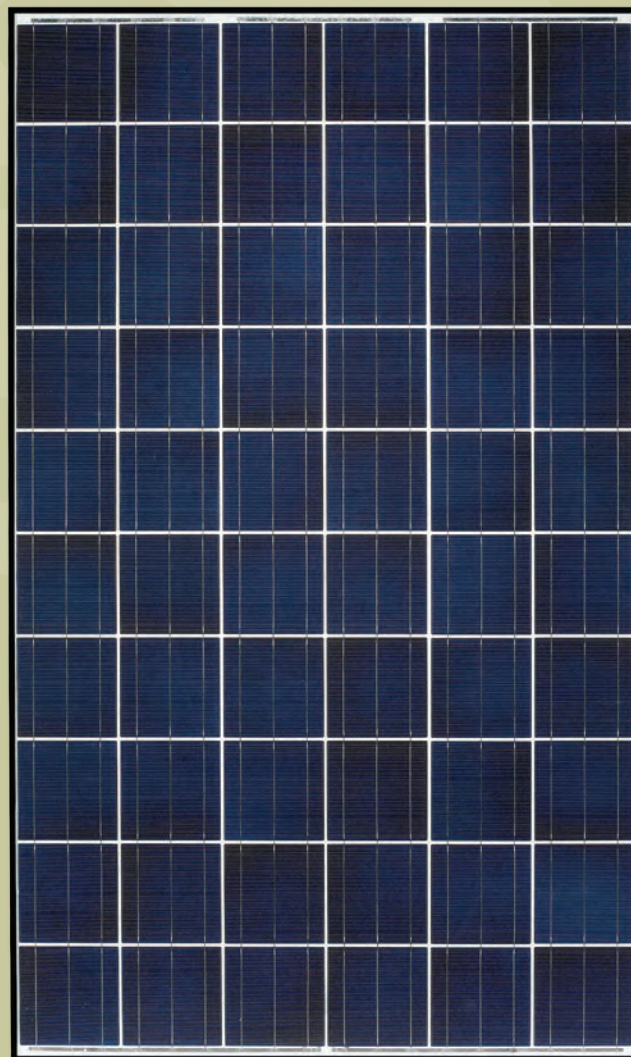
As a pioneer with over 35 years in the solar energy industry, Kyocera demonstrates leadership in the development of solar energy products. Kyocera's *Kaizen* Philosophy, commitment to continuous improvement, is shown by repeatedly achieving world record cell efficiencies.

QUALITY BUILT IN

- UV stabilized, aesthetically pleasing black anodized frame
- Supported by major mounting structure manufacturers
- Easily accessible grounding points on all four corners for fast installation
- Proven junction box technology with 12 AWG PV wire to work with transformerless inverters
- Quality locking MC4 plug-in connectors to provide safe and quick connections

RELIABLE

- Proven superior field performance
- Tight power tolerance
- Only module manufacturer to pass rigorous long-term testing performed by TÜV Rheinland



QUALIFICATIONS AND CERTIFICATIONS

UL Listing
QIGU.E173074



Registered to ISO9001-2000

NEC 2008 Compliant, UL 1703, ISO 9001, and ISO 14001
UL1703 Certified and Registered, UL Fire Safety Class C, CEC, FSEC



Manufactured in San Diego, California
QUALIFIED FOR "BUY AMERICAN"
Available Upon Request



ELECTRICAL SPECIFICATIONS

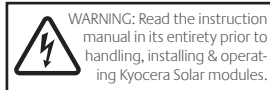
Standard Test Conditions (STC) <i>STC = 1000 W/M² irradiance, 25°C module temperature, AM 1.5 spectrum*</i>				
	KD240GX-LFB	KD245GX-LFB	KD250GX-LFB	
P _{mp}	240	245	250	W
V _{mp}	29.8	29.8	29.8	V
I _{mp}	8.06	8.23	8.39	A
V _{oc}	36.9	36.9	36.9	V
I _{sc}	8.59	8.91	9.09	A
P _{tolerance}	+5/-3	+5/-3	+5/-3	%

Nominal Operating Cell Temperature Conditions (NOCT) <i>NOCT = 800 W/M² irradiance, 20°C ambient temperature, AM 1.5 spectrum*</i>				
	KD240GX-LFB	KD245GX-LFB	KD250GX-LFB	
T _{NOCT}	45	45	45	°C
P _{max}	172	176	180	W
V _{mp}	26.7	26.8	26.8	V
I _{mp}	6.45	6.58	6.72	A
V _{oc}	33.7	33.7	33.7	V
I _{sc}	6.95	7.21	7.36	A
PTC	217.3	219.1	223.7	W

Temperature Coefficients				
P _{max}	-0.46	-0.46	-0.46	%/°C
V _{mp}	-0.52	-0.52	-0.52	%/°C
I _{mp}	0.0064	0.0065	0.0065	%/°C
V _{oc}	-0.36	-0.36	-0.36	%/°C
I _{sc}	0.060	0.060	0.060	%/°C
Operating Temp	-40 to +90	-40 to +90	-40 to +90	°C

System Design	
Series Fuse Rating	15 A
Maximum DC System Voltage (UL)	600 V
Hailstone Impact	1 in (25mm) @ 51mph (23m/s)

* Subject to simulator measurement uncertainty of +/- 3%. KYOCERA reserves the right to modify these specifications without notice.

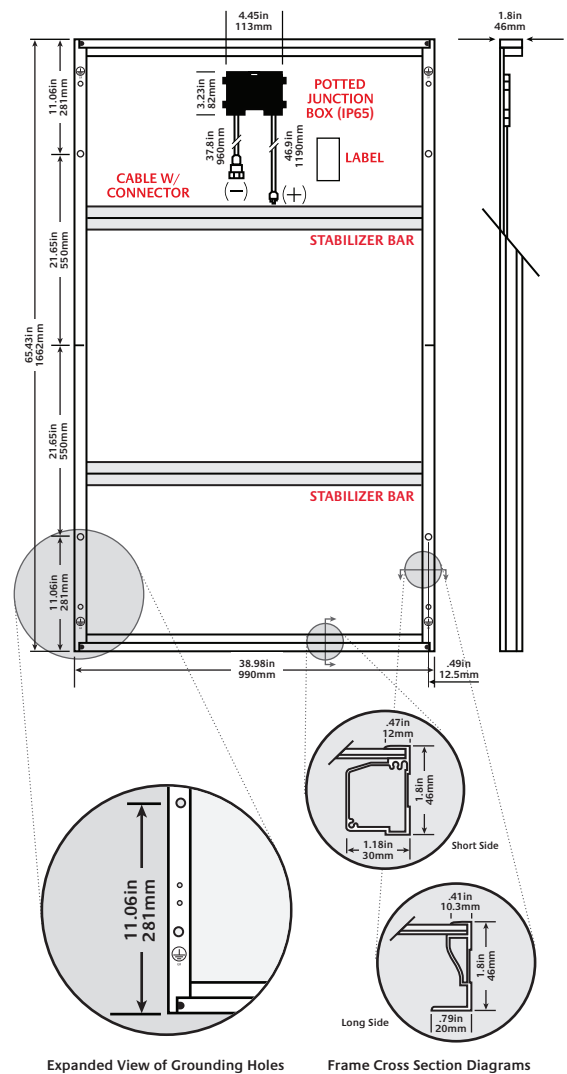


MODULE CHARACTERISTICS

Dimensions: length/width/height	65.43in/38.98in/1.8in (1662mm/990mm/46mm)
Weight:	46.3lbs (21.0kg)

PACKAGING SPECIFICATIONS

Modules per pallet:	20
Pallets per 53' container:	36
Pallet box dimensions: length/width/height	66in/40in/47in (1675mm/1005mm/1175mm)
Pallet box weight:	1040 lbs (470kg)



Legend	
○ MOUNTING HOLES	● DRAINAGE HOLES
○ .35in (9mm)	● .35in (9mm)